



MaestroBath

Designed & Handmade in Italy

Cleaning and Maintenance
Manual

Bathroom/Kitchen Faucets Cleaning and Maintenance

Congratulations on your purchase of MaestroBath Faucet. Please follow below cleaning and maintenance instructions to increase longevity of your faucet.

Special finishes, including PVD, require special care when installing and cleaning.

In order to maintain your products original finish, use only mild soap and soft cloth or sponge to clean the product and then dry with a soft cloth to retain shine.

MaestroBath recommends the use of finish protecting products such as “Faucet-Brite” to preserve your products finish.

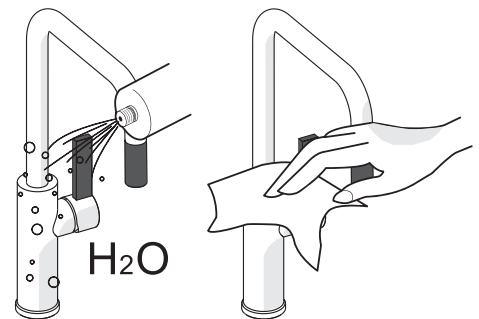
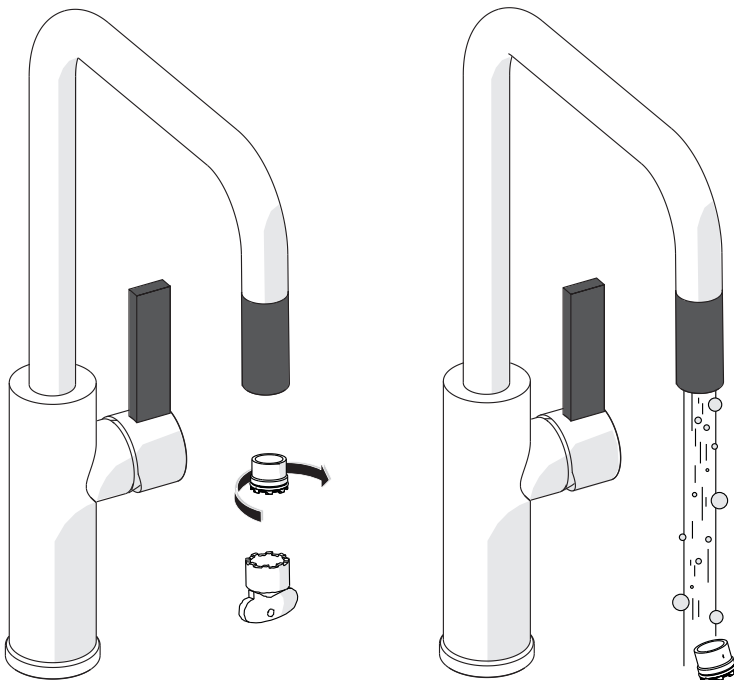
Avoid the following cleaning products that can cause damage to faucet finish:

- Industrial cleaners
- Abrasive cleaners
- Toilet bowl cleaners
- Bleach-based cleaners
- Ammonia solutions
- SOS, Scotch-Write, Bleach or other abrasive products will damage the finish and void the warranty.

NOTE: Drying the faucet with a soft cloth after each use will help prevent mineral deposits.

How to remove lime and mineral deposits from aerator

- Unscrew aerator or use the special tool that came with your faucet
- If your aerator has a separate black sealing gasket, rinse it in clear water.
- Soak the aerator in a 50/50 vinegar and water solution for several hours.
- Flush the aerator with water.
- Rub stubborn deposits with a toothbrush.



How to flush faucet in new construction

Typically, after new construction a small amount of construction debris may be flushed out of your pipe system during the first few days you use your faucets.

Solder particles, copper chips, plumber tape and other installation materials can also get caught in aerators and showerheads. The tips below will help you avoid problems.

It's also a good idea to follow these procedures each time the water has been turned off for repairs in your home.

- In case of pullout faucets, first unscrew the shower head from the hose and then remove aerator using the special tool that came with your faucet (shown above). For some faucet models, the aerator (and black sealing gasket above it) may be removed by hand.
- Turn hot and cold faucet handle(s) to full-on position(s) and flush lines for two minutes before turning off water. Make sure not to move the handle(s).
- Replace aerator (and gasket, depending on your model).

Bathroom Sinks

Cleaning and Maintenance

Please clean the products with water and neutral soap only, using soft towels.

Do not use for any reason cleaning solutions containing abrasive or aggressive substances. incorrect cleaning may permanently ruin the surface of the products and in such case the company may not be held liable for the damage.

For the correct installation use, all elements recommended with the products.

Support

In case of any unanswered questions, please directly contact us:



support@maestrobath.com



1-800-350-1120